

# Session 6b: Methods for Financing GI

---

Matching Resources to Network Needs

Ole Amundsen, The Conservation Fund



---

Strategic Conservation Planning Using A Green Infrastructure Approach

# Green Infrastructure Implementation Quilt –

---

## General Guidance

- ✓ Not uncommon to have a gap between aspirations and the current capacity
- ✓ Use existing programs
- ✓ Improve communications with organizations and between organizations
- ✓ Partnering - Collaboration increases capacity



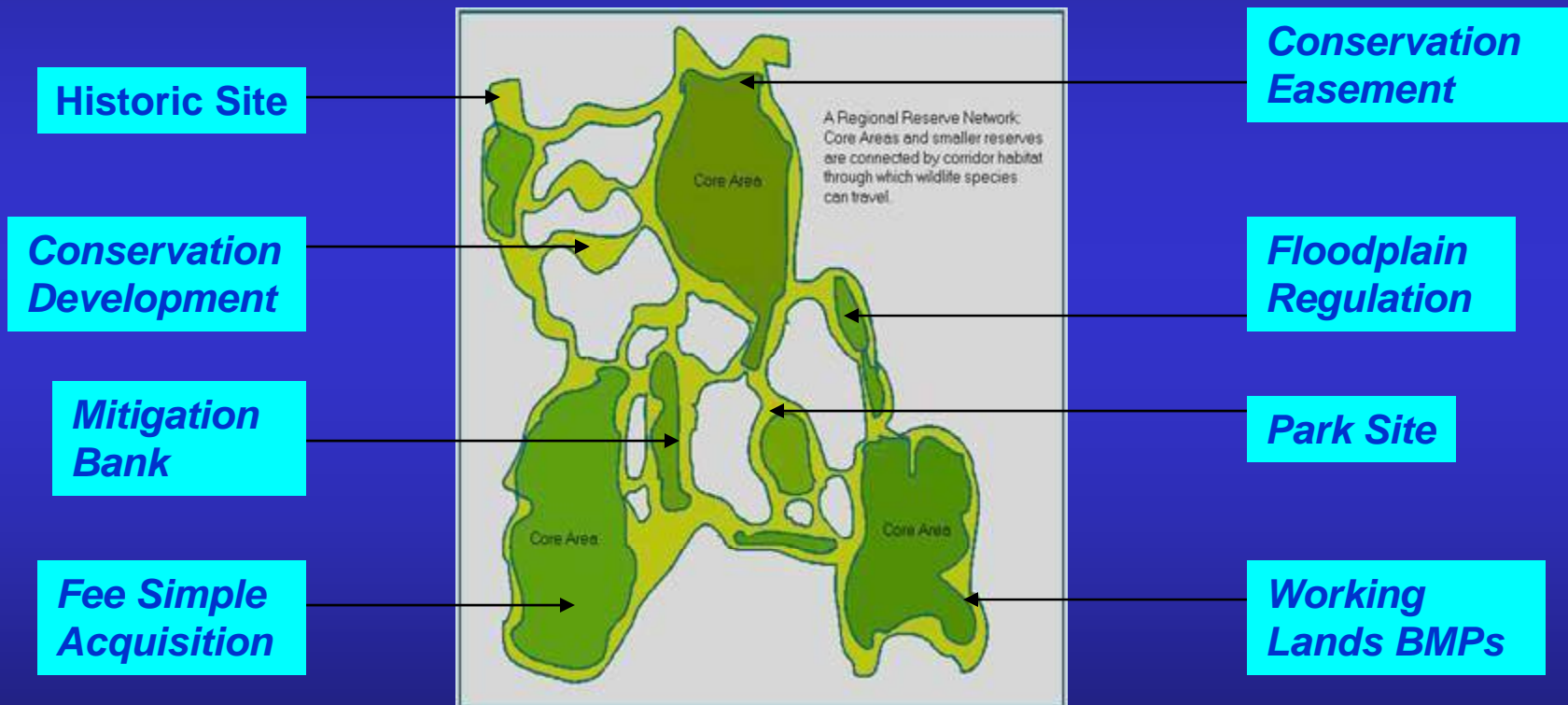
Pick the low hanging fruit first!

# Green Infrastructure

## Matching Resources to Network Needs

---

- ✓ Match financial, management and other identified tools to the different elements of your green infrastructure network

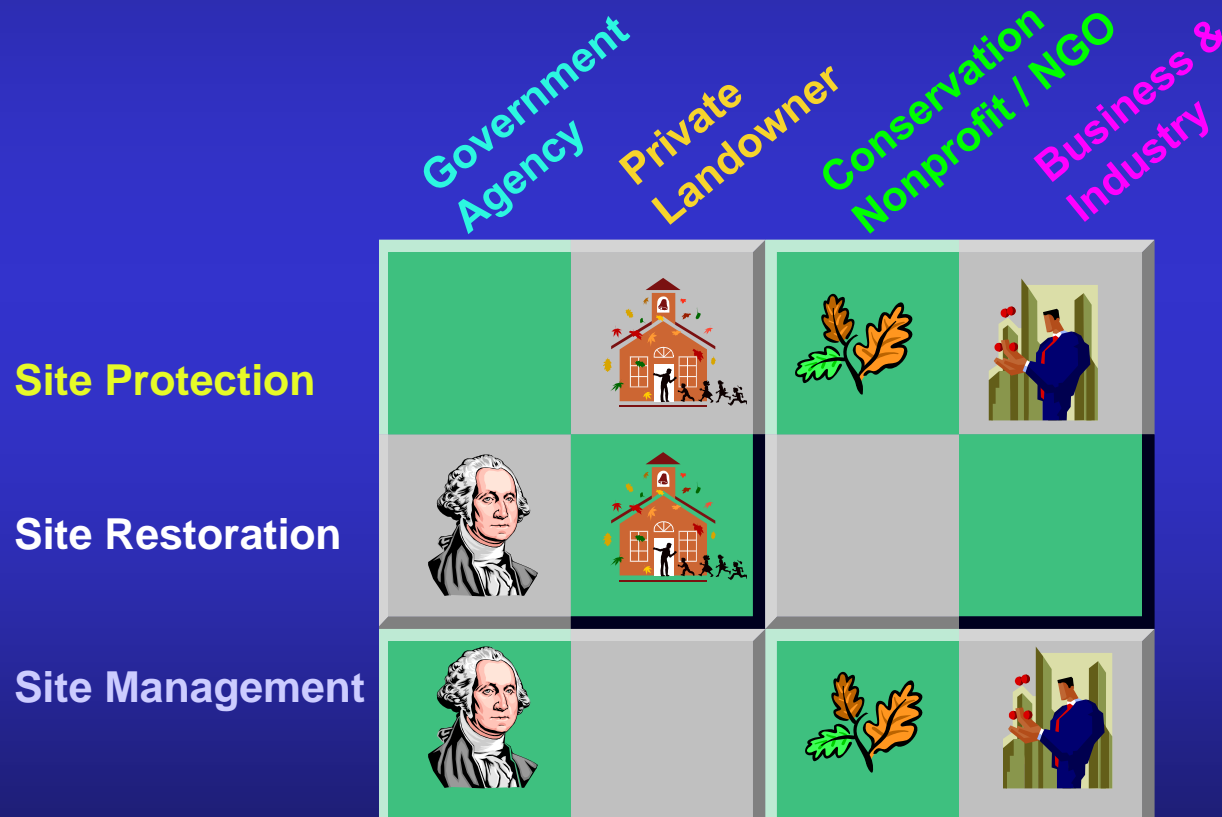


---

Strategic Conservation Planning Using A Green Infrastructure Approach

# Green Infrastructure Implementation Quilt – Matching Resources to Network Needs

- ✓ Identify the various people, programs and organizations that can act to implement the different elements of your network



Strategic Conservation Planning Using A Green Infrastructure Approach

# Work Collaboratively with landowners

---

Help private landowners maintain or improve the steward of their lands, match them with federal and state incentive programs:

## Natural Resource Conservation Service

- Wetland Reserve Program
- Wildlife Habitat Incentive Program
- Conservation Reserve Program
- Floodplain Easement Program

## US Fish and Wildlife Service

- Partners for Wildlife

## State Programs

- Conservation Reserve Enhancement Program
- Property Tax Abatement Programs that recognize land use as instead of highest and best use

# Water!

---

Link implementation with water resource funding

## **US Environmental Protection Agency**

- Clean Water Act Section 319 funding for reducing nonpoint source pollution
- Change state requirements to allow funds from State Drinking Water Act State Revolving Fund and Clean Water State Revolving Fund for land conservation

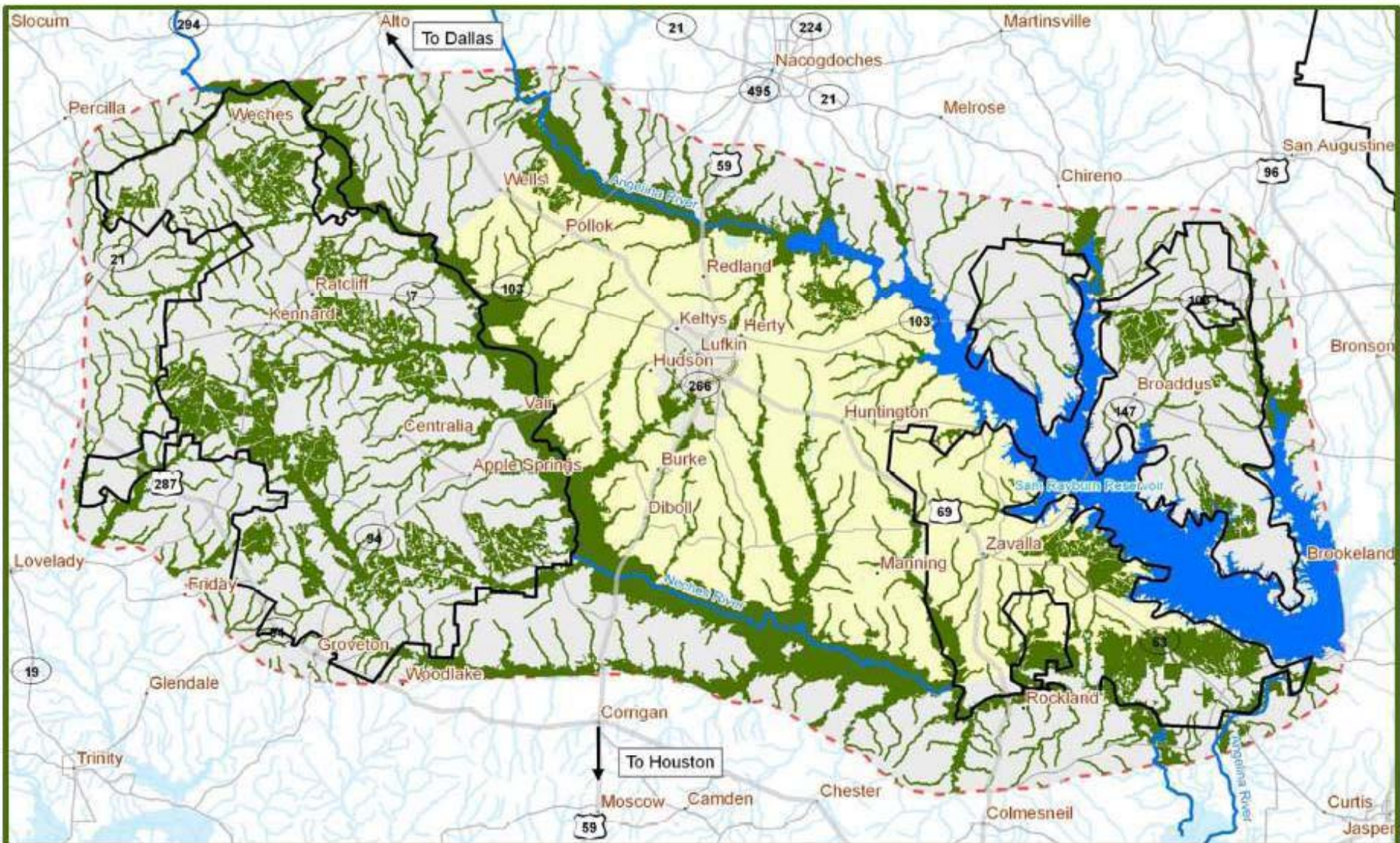
## **Federal Emergency Management Agency**

- Participate in the Community Rating System, reduce repetitive loss properties, conserve land that is vulnerable to flooding as community open space
- Hazard Mitigation Grant Program : fund projects that will reduce or eliminate the losses from future disasters

## **Local Government**

- Storm water Management fees – apply to land conservation/restoration
- 

Strategic Conservation Planning Using A Green Infrastructure Approach



**Legend**

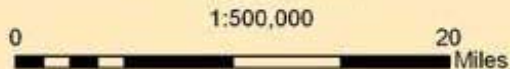
- Green Infrastructure Study Area
- Angelina County
- City of Lufkin
- Cities
- Green Infrastructure Network
- USDA Forest Service Authorized Boundary

**Major Roads**

- Limited Access
- Highway
- Major Road

## Angelina County, TX Green Infrastructure

Spatial Reference: Universal Transverse Mercator Zone 15N,  
NAD83 Datum, Meters



**Data Sources**

- ESRI Data and Maps CD
- The Conservation Fund
- Texas Parks and Wildlife Department
- Lower Mississippi Valley Joint Venture
- USDA Forest Service
- Angelina County
- City of Lufkin GIS
- City of Diboll
- US Army Corps of Engineers

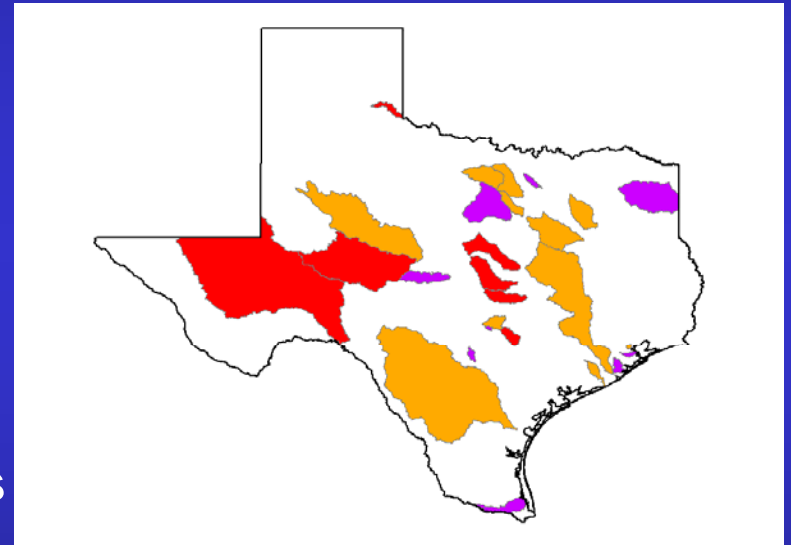
Prepared by The Conservation Fund  
June 2008

# Green Infrastructure Implementation Quilt – State Program – with Federal Support

---

## Texas State Soil and Water Conservation Board Funding

- ✓ Reducing Nonpoint Source Pollution to expand allowable uses (fishing, swimming)
- ✓ Issued an RFP in 2007 for the Neches River – no submissions, expect next RFP fall of 2008
- ✓ Multi-year grants for planning and implementation, 60% federal funds – 40% match funding
- ✓ Tip: involve Texas Forest Service & Soil and Water Conservation District

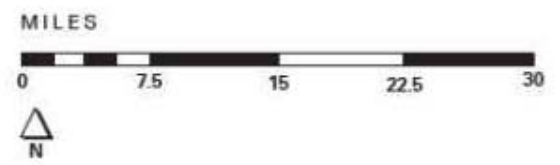
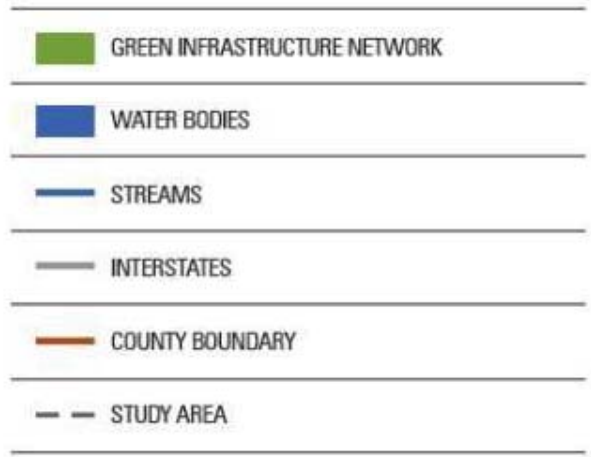
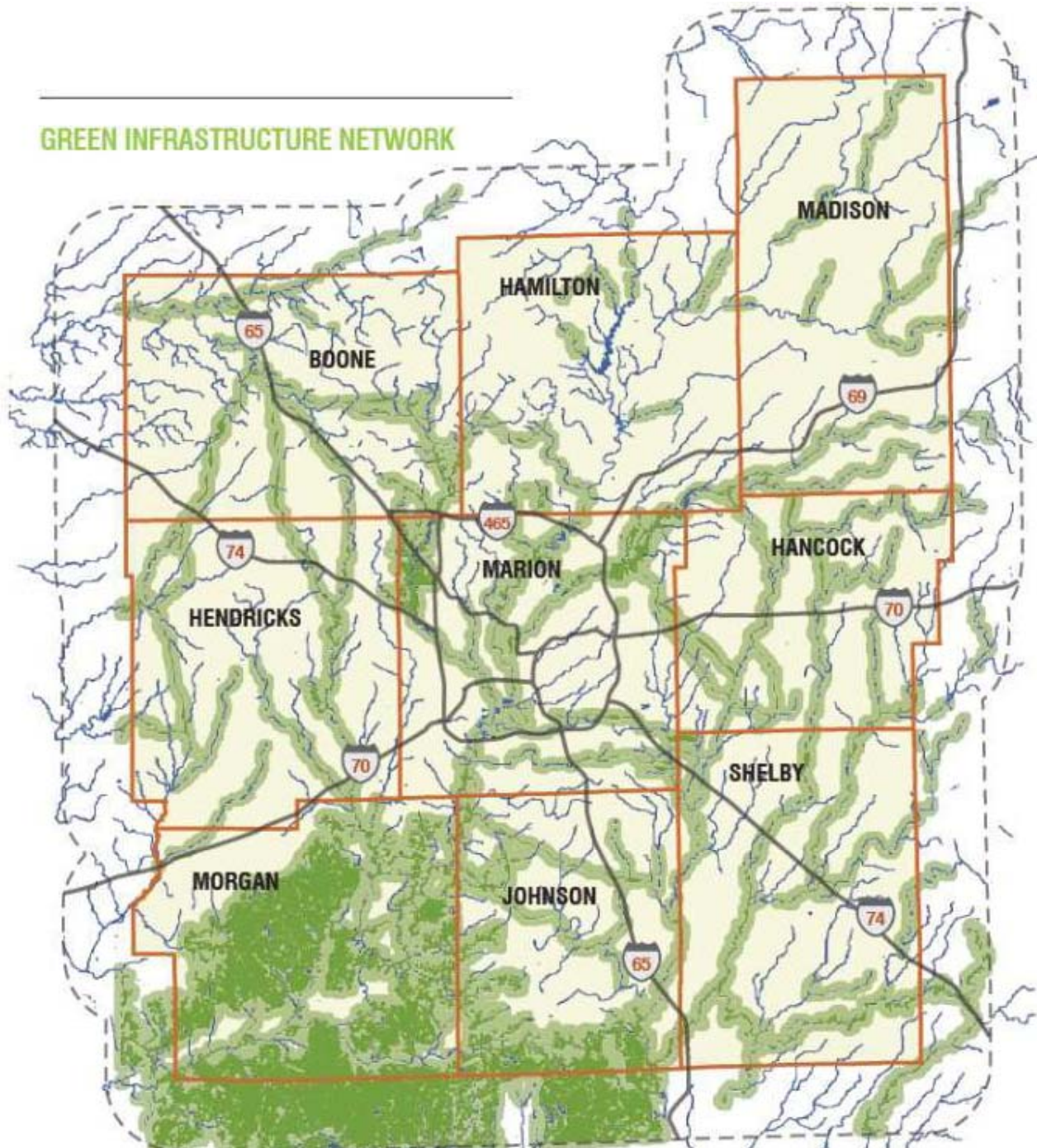


<http://www.tsswcb.state.tx.us/wpp>

---

Strategic Conservation Planning Using A Green Infrastructure Approach

## GREEN INFRASTRUCTURE NETWORK

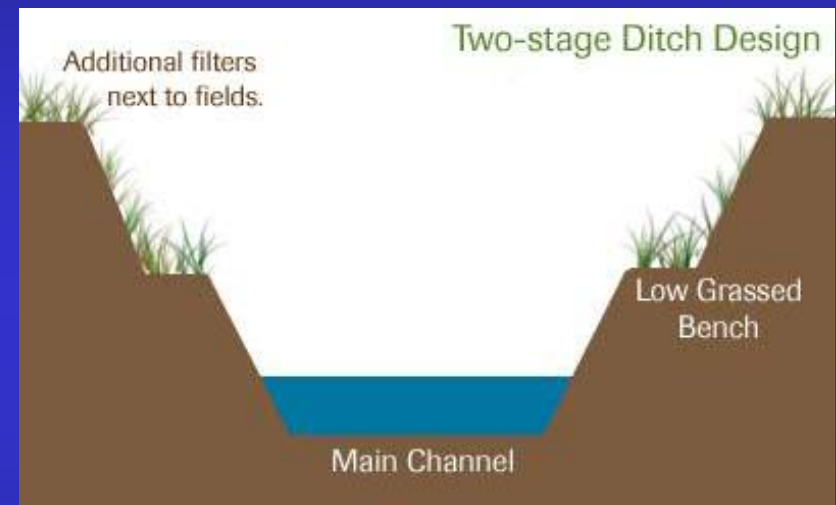


# Green Infrastructure Implementation Quilt – Regulated Drains and Innovative Designs

---

County Drainage Board maintain a significant grey infrastructure of “regulated drains”

- Once a stream is declared a regulated drain, the drainage may clear a 75 foot buffer on either side of the channel
- This maintenance strategy had significant environmental impacts
- Two stage drains are an alternative design that might reduce the environmental impacts



TNC Indiana Chapter Website

*Breaking News: Two stage drains will soon be eligible as a cost-share practice with NRCS Environmental Quality Incentive Program*

---

Strategic Conservation Planning Using A Green Infrastructure Approach

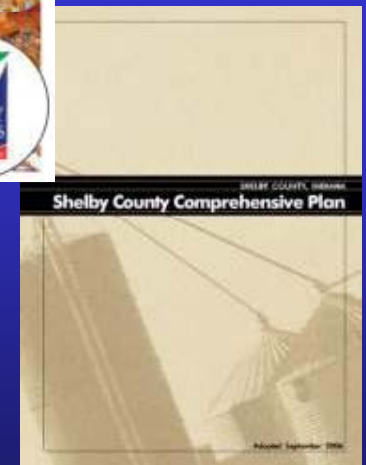
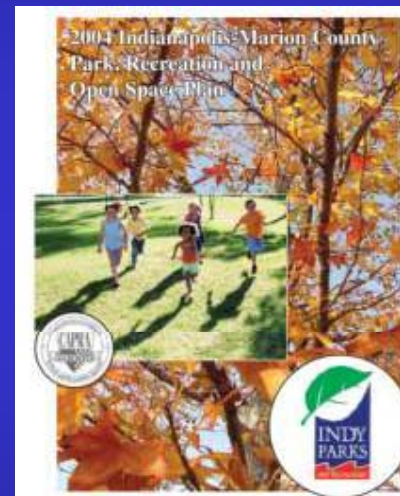
# Green Infrastructure Implementation Quilt – Local Level

---

Central Indiana Land Trust received a \$200,000 grant for implementation – a large part of the funding is devoted to working with local governments.

## Use GI Network when Updating Plans:

- ✓ Comprehensive Plans
- ✓ Parks and Recreation Plans
- ✓ Hazard Mitigation Plans
- ✓ Grey Infrastructure Plans



---

Strategic Conservation Planning Using A Green Infrastructure Approach